

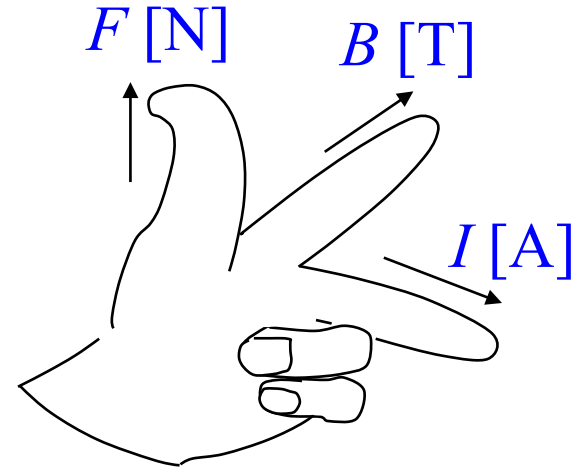
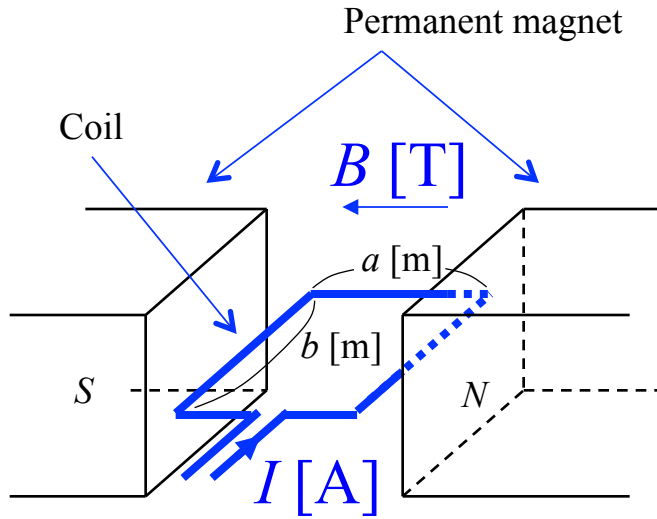
# Power Electronics

## No. 8: Principle of DC motor

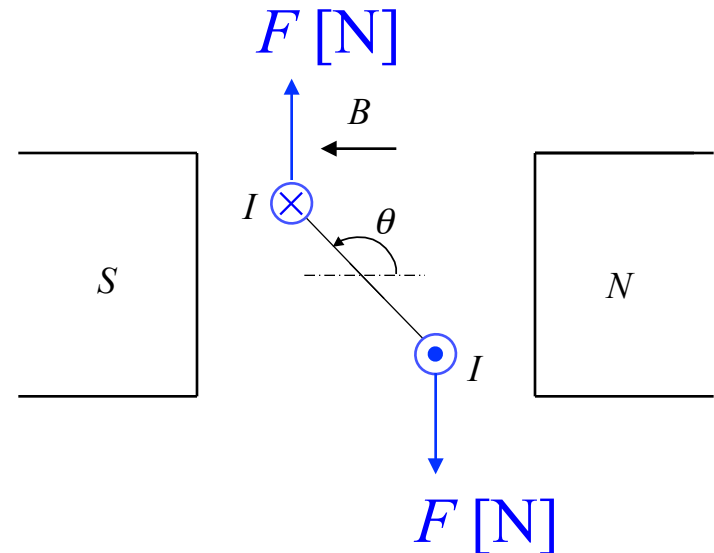
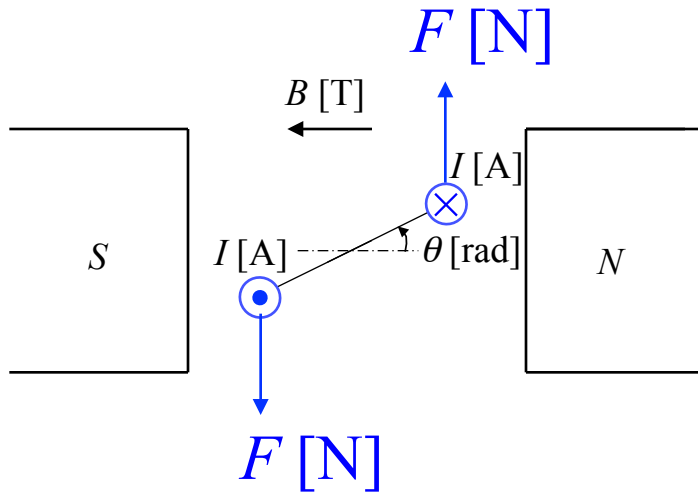
Takeshi Furuhashi

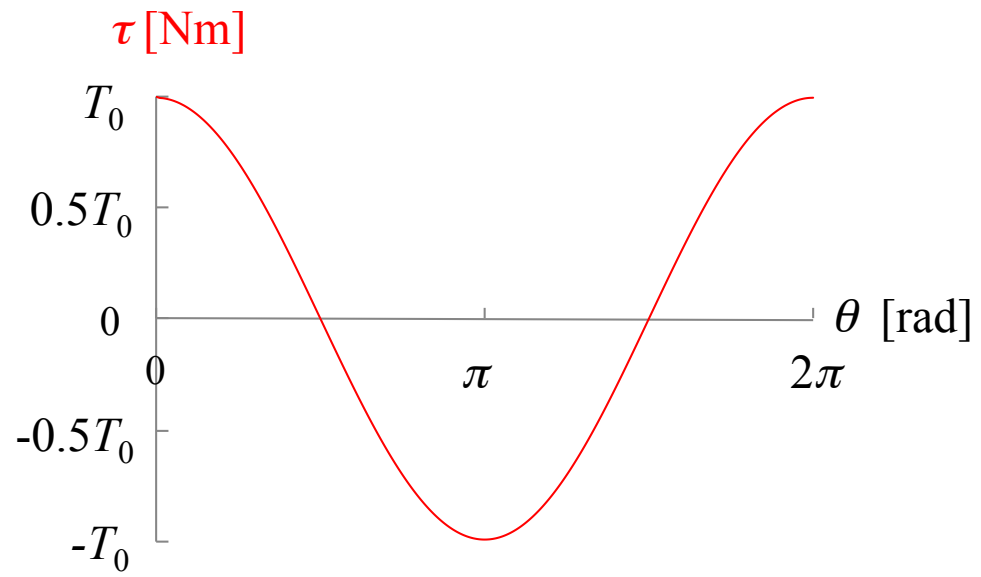
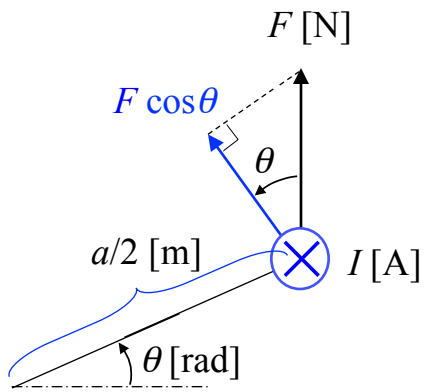
Furuhashi\_at\_cse.nagoya-u.ac.jp

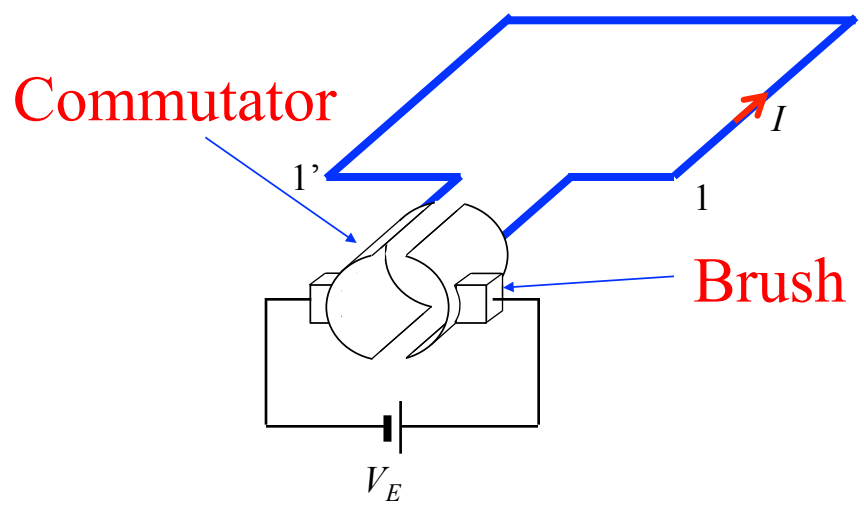
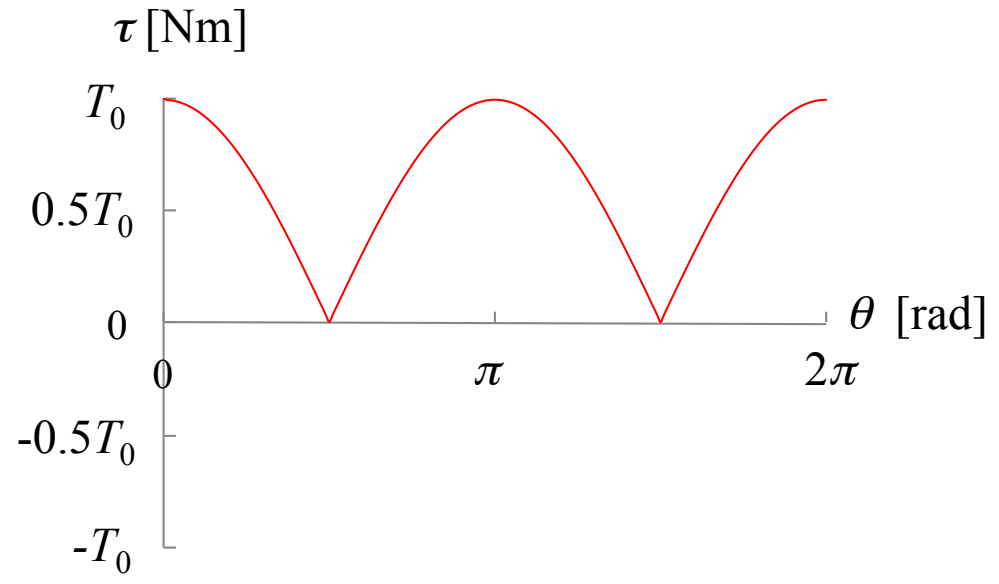
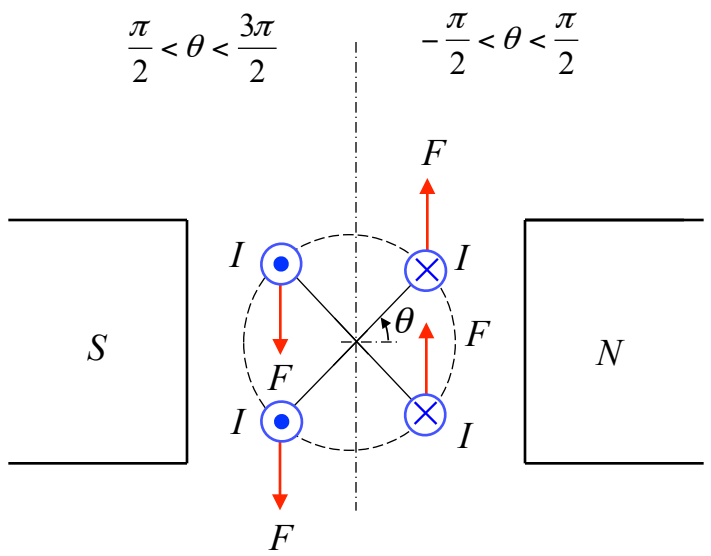
# Torque generation



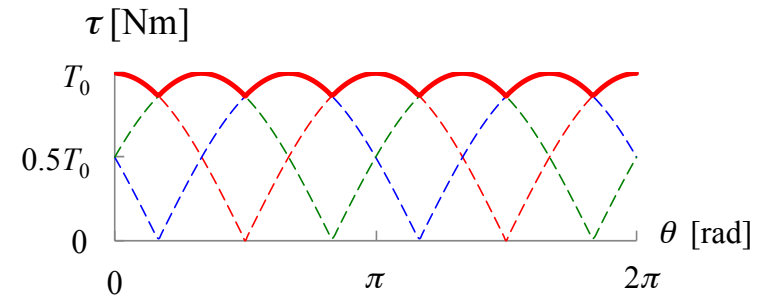
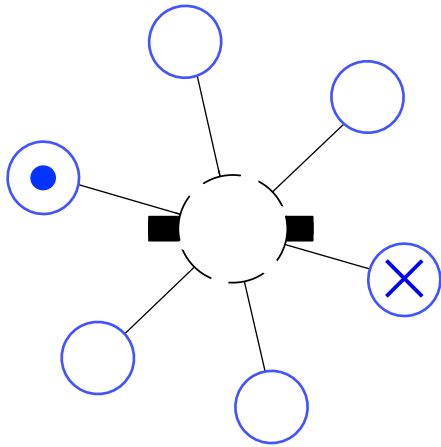
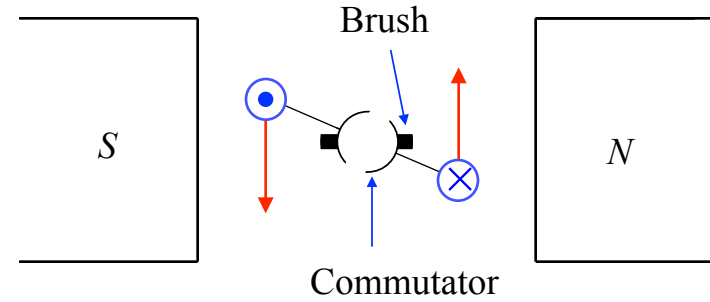
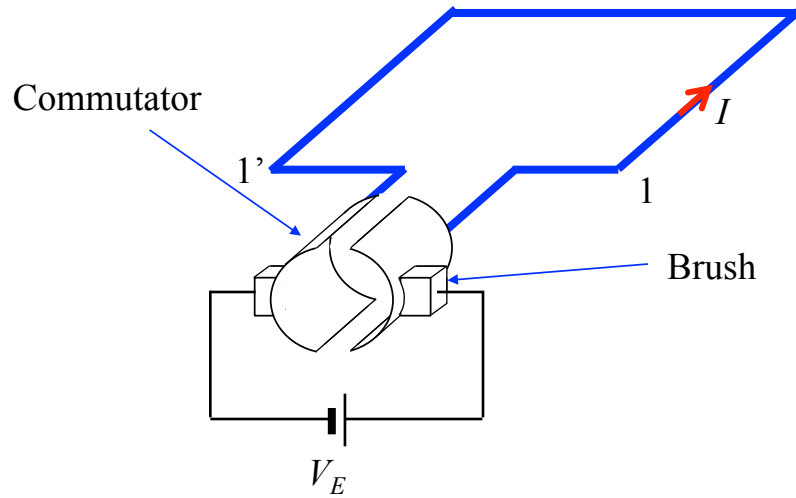
Fleming's Left Hand Rule

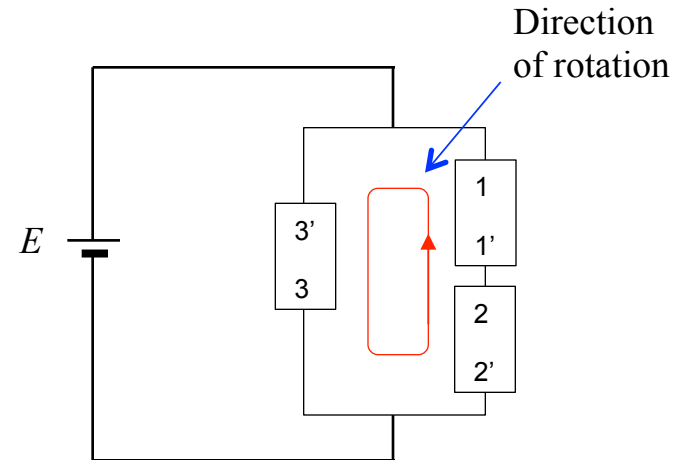
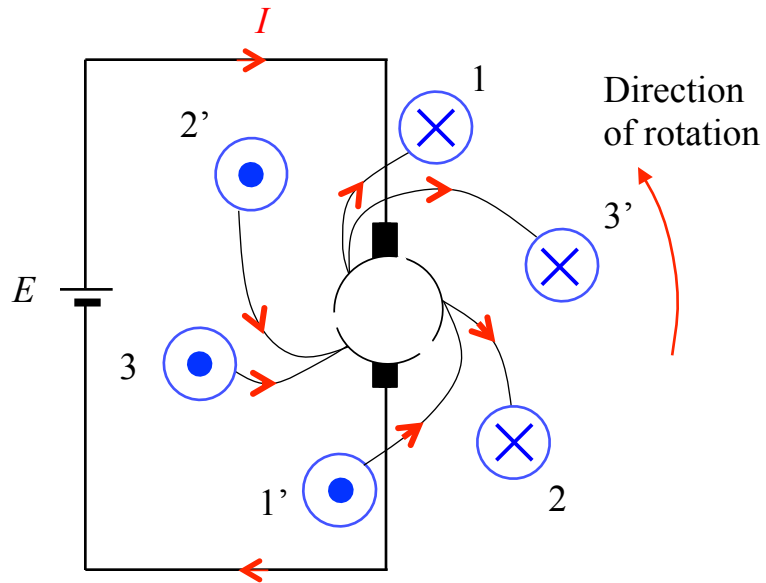
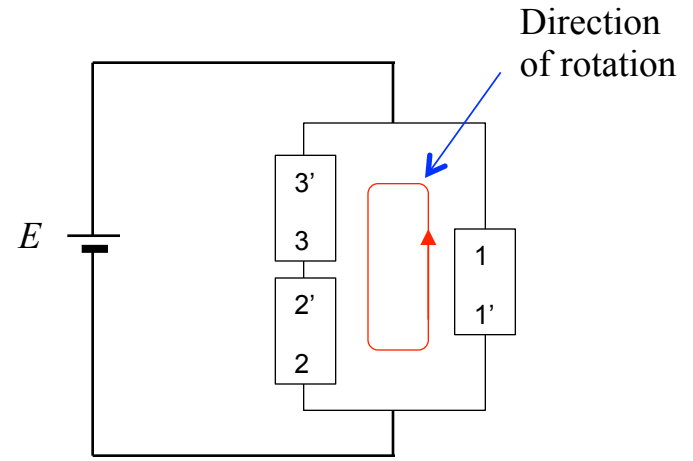
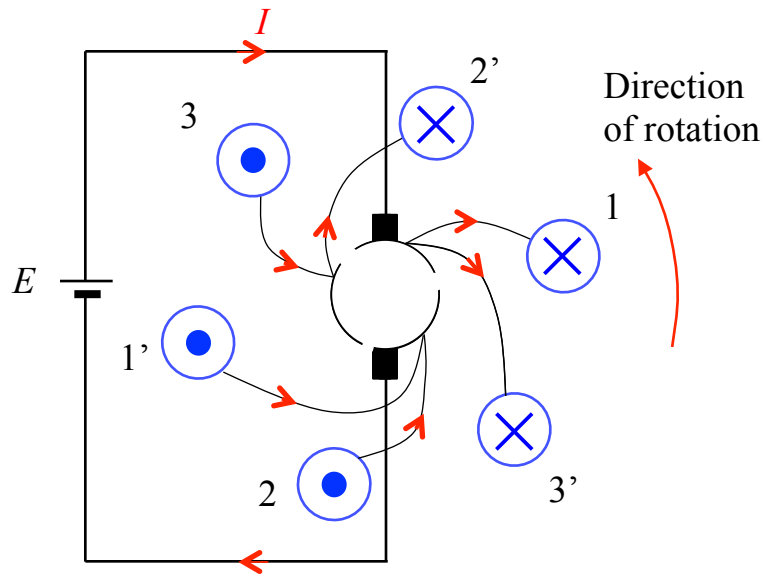






# Smoothing torque ripple

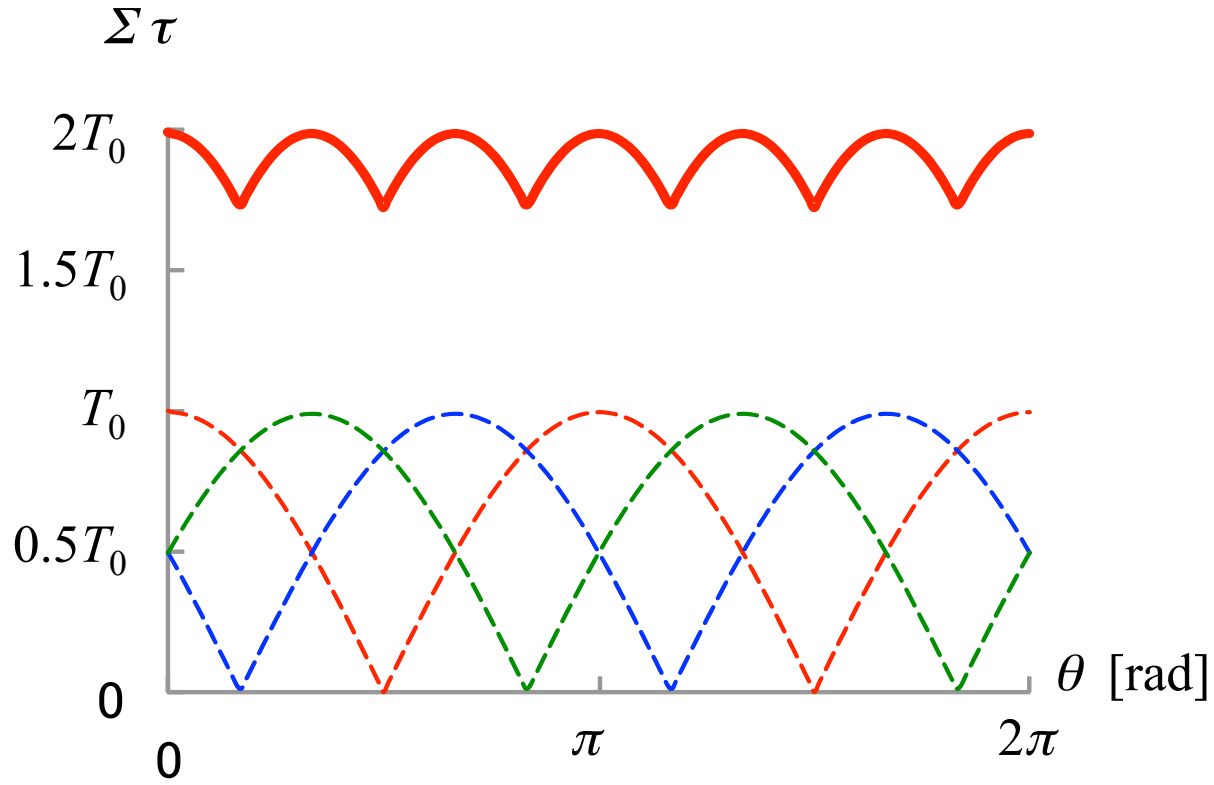




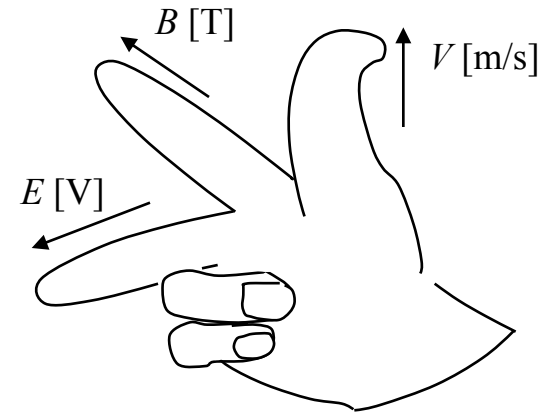
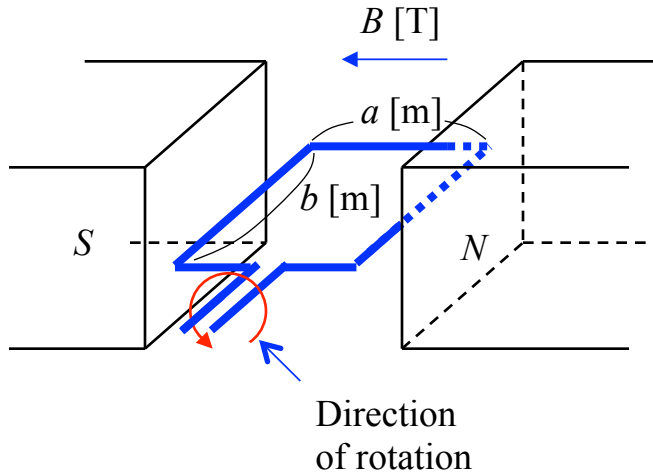
(a) Connections of coils and commutators

(b) Connections of coils

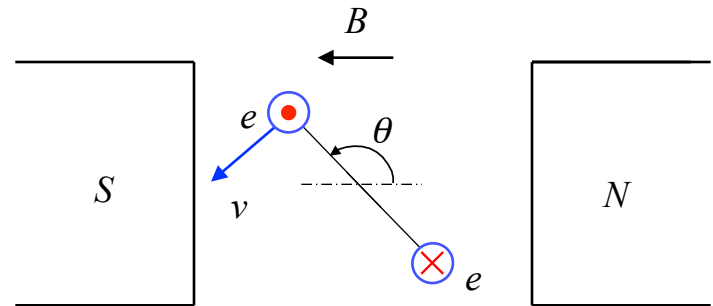
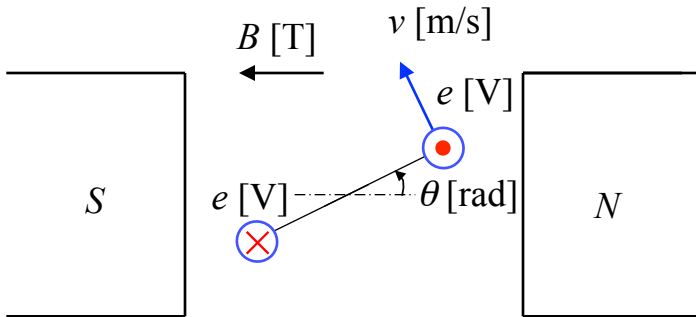
# Smoothing torque ripple



# Voltage generation

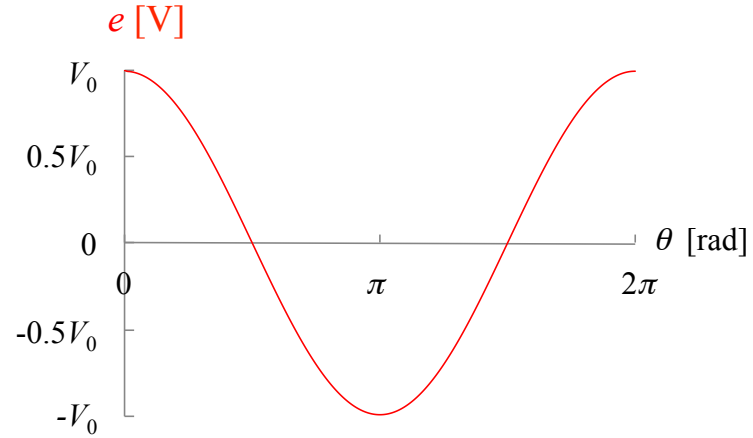
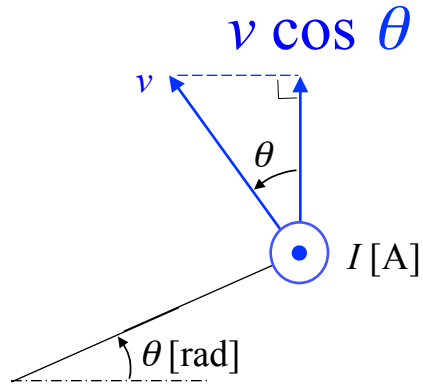


Fleming's Right Hand Rule

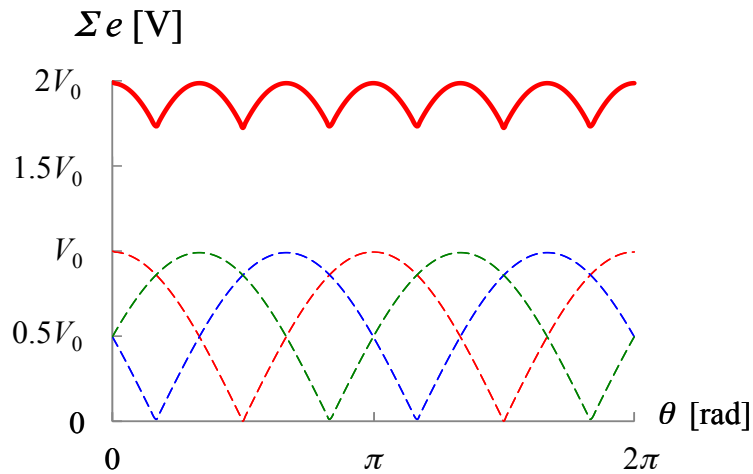




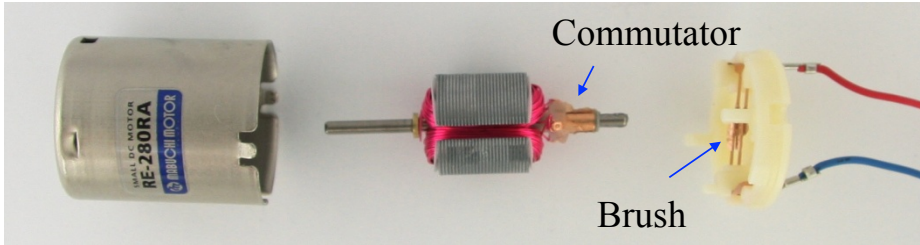
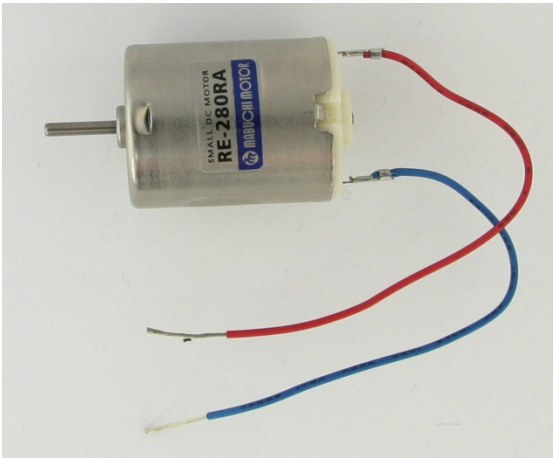
# Voltage generation



# Smoothing voltage ripple

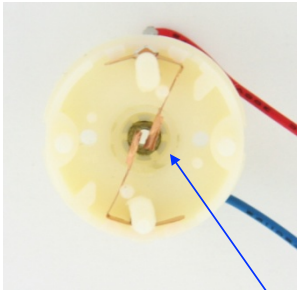
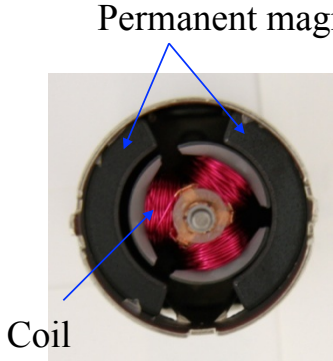


# Photos of DC motor



Stator

Rotor



Brush